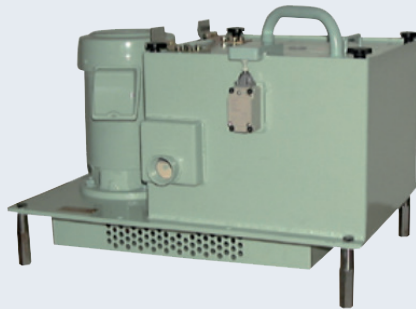


Centrifuges



- 1. Cost saving.**
- 2. Improving production reliability and product quality.**
- 3. Environmental responsibility.**



up to 3.000 RPM!

Features:

High capacity solid particle and sludge removal, for

- Water based fluids, emulsions and process water.
- Oil based fluids up to max 20 cSt. viscosity at operating temperature.

The centrifuges provide highly efficient and reliable liquid/solids separation capability and virtually dry solids discharge without the use of consumable filtration elements.

Available with manual operation, or full automatic with touch screen control panel and build-in dirt scraper.

The open conic bowl concept allows easy cleaning and removal of the separated dirt. Low maintenance cost.

Flow rates from 15 lit/min up to 200 lit/min.

No consumables, one-time investment.



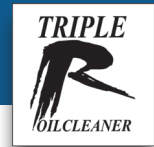
Benefits:

- Separates micron sized particles, such as aluminum/steel dust, carbon, lens and glass dust, stone dust and mud.
- Dehydrates and solidifies sludge.
- Improves machine reliability and product quality.
- Increases production speed and productivity.
- Extends useful life of coolants and oil; reduces coolant and oil consumption and prevents deterioration of the fluid. Additives will not be separated.
- Important reduction of maintenance costs.

Typical applications:

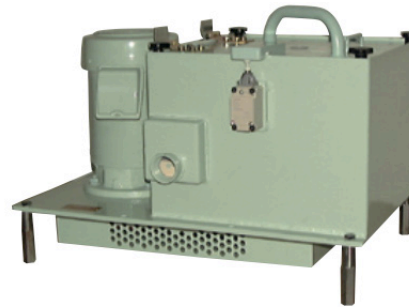
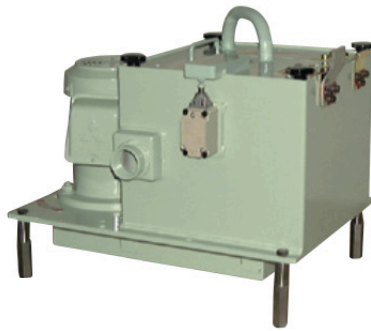
- Coolants for metal, glass or ceramic machining or forming.
- Surface treatment baths and parts washers, like washing steel plates in metal stamping.
- Paint shop water.
- Metalworking, metals pretreatment, wire drawing.

Centrifuges



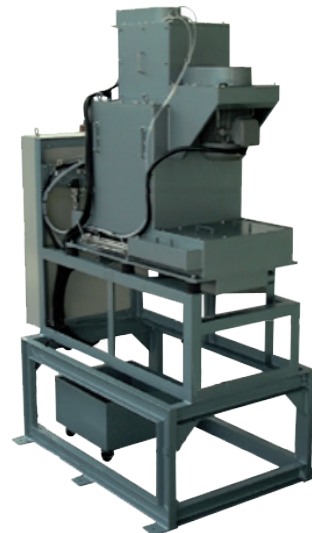
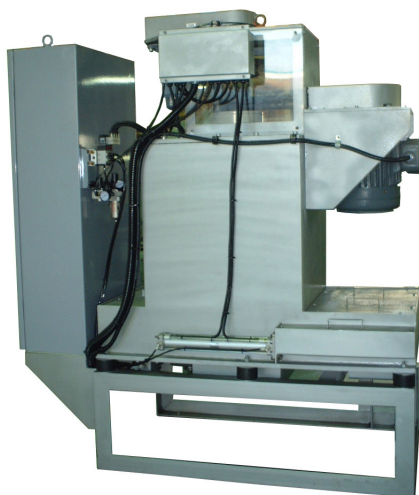
Technical specifications MANUAL centrifuges

Model	Motor	Power	Max. Flow	RPM	Dimensions mm	Weight kg
TRS30-M	400Vx3 - 50Hz	0,75 KW	max.30 l/m	2.810	300 x 500 x 377	55 kg
TRS50-M		1,5 KW	max. 50 l/m	1.881	380 x 650 x 422	100 kg



Technical specifications AUTOMATIC centrifuges

Model	Motor	Power	Max. Flow	RPM	Dimensions mm	Weight kg
TRS100-A	400Vx3 - 50Hz	3,70 KW	100 l/m	3.000	630 x 1100 x 1768	650 kg
TRS200-A		5,5 KW	200 l/m	2.500	730 x 1200 x 1768	750 kg



Important note:

The flow rates mentioned are for water based fluids. In case of oil the max. flow rate will be 50% of the indicated flow.

Above mentioned models are our standard models.
Contact your local distributor for further information.